



# BOTANICA **PLANKS**

**by signature®**



**JAPONAISE**  
A DUSTING OF  
COLOUR IN A  
NEUTRAL BASE

# BOTANICA

as in nature,  
it's all in the detail

introducing  
Botanica Planks  
by Signature Floors





from nature's  
own colour book

**HEARTBEAT**  
VIBRANT SPLASH  
OF BRILLIANT RED

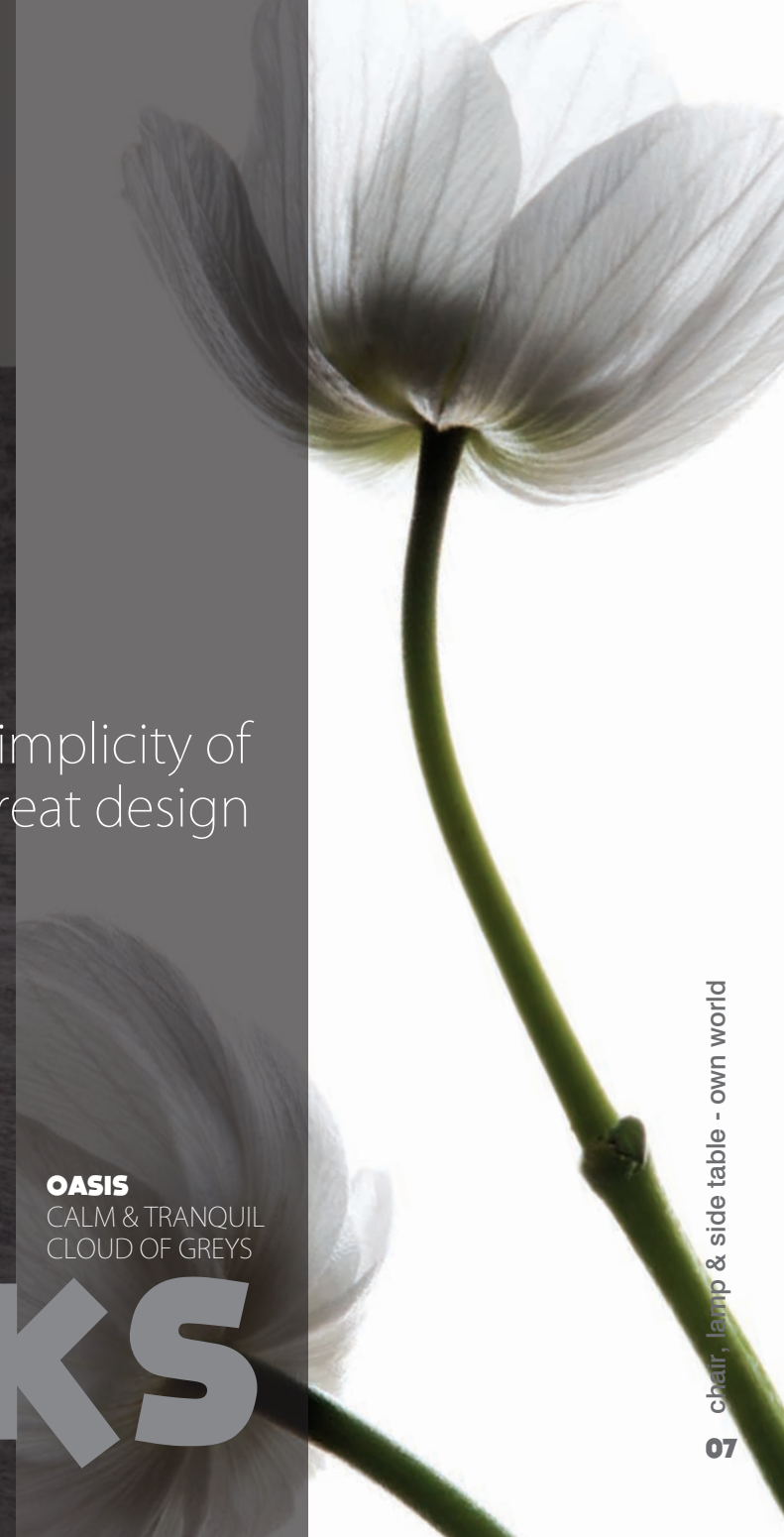
# PLANKS



the simplicity of  
great design

**OASIS**  
CALM & TRANQUIL  
CLOUD OF GREYS

# PLANKS





**LOVER**  
A ROMANTIC  
COLOUR STORY

# BOTANICA

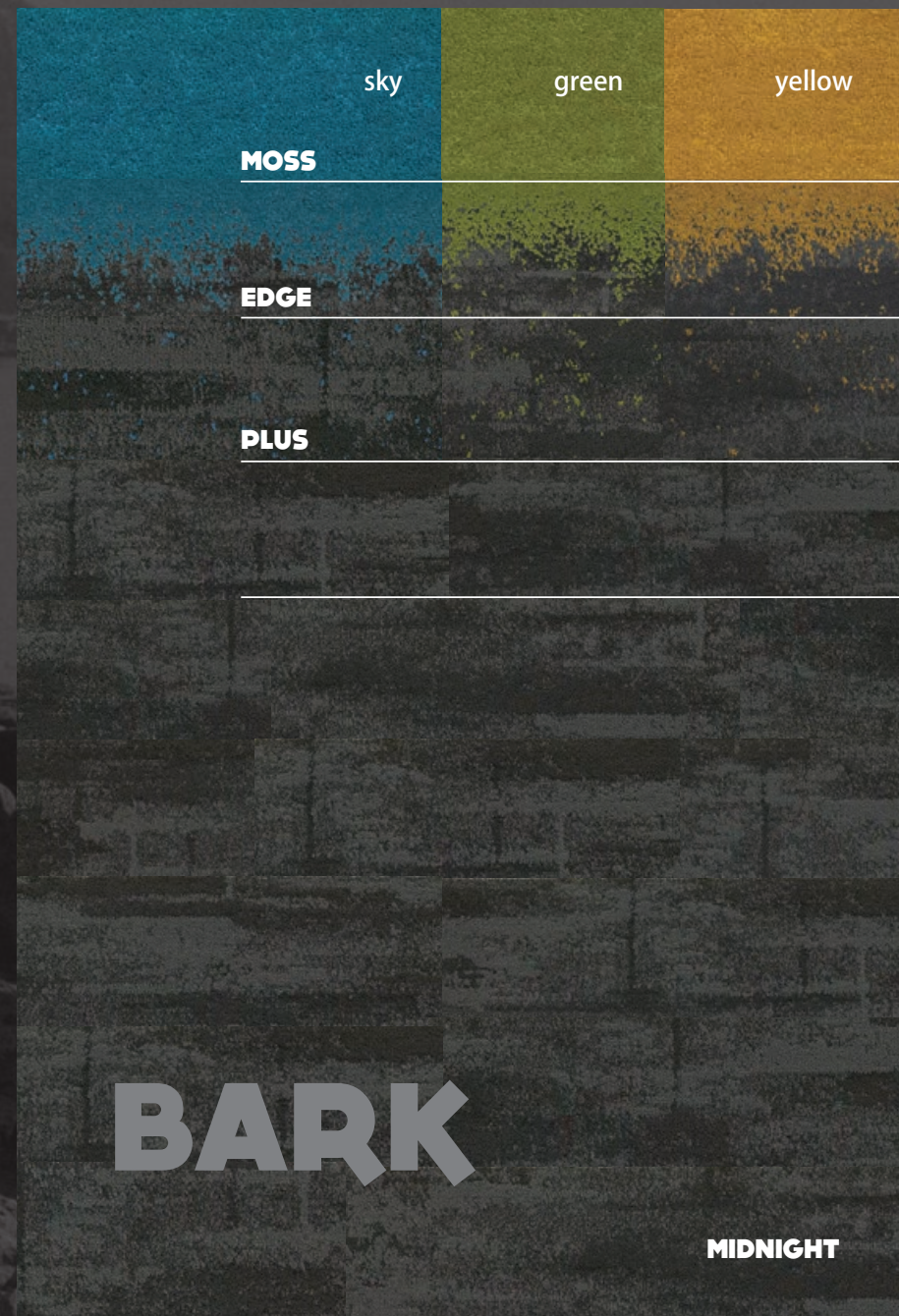
nature's  
sophisticated  
combinations



echoing the  
beauty of nature  
around us

# BOTANICA

[WWW.SIGNATUREFLOORS.COM.AU/BOTANICA-PLANKS](http://WWW.SIGNATUREFLOORS.COM.AU/BOTANICA-PLANKS)



sky

green

yellow

**MOSS**

**EDGE**

**PLUS**

## BARK

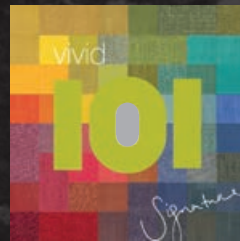
**MIDNIGHT**

## DESIGN OPTIONS

# Versatile Botanica Planks

Botanica Planks are available in stock in 52 references.

In addition, Botanica Planks can be ordered in any Signature VIVID 101 colour for custom projects.\*

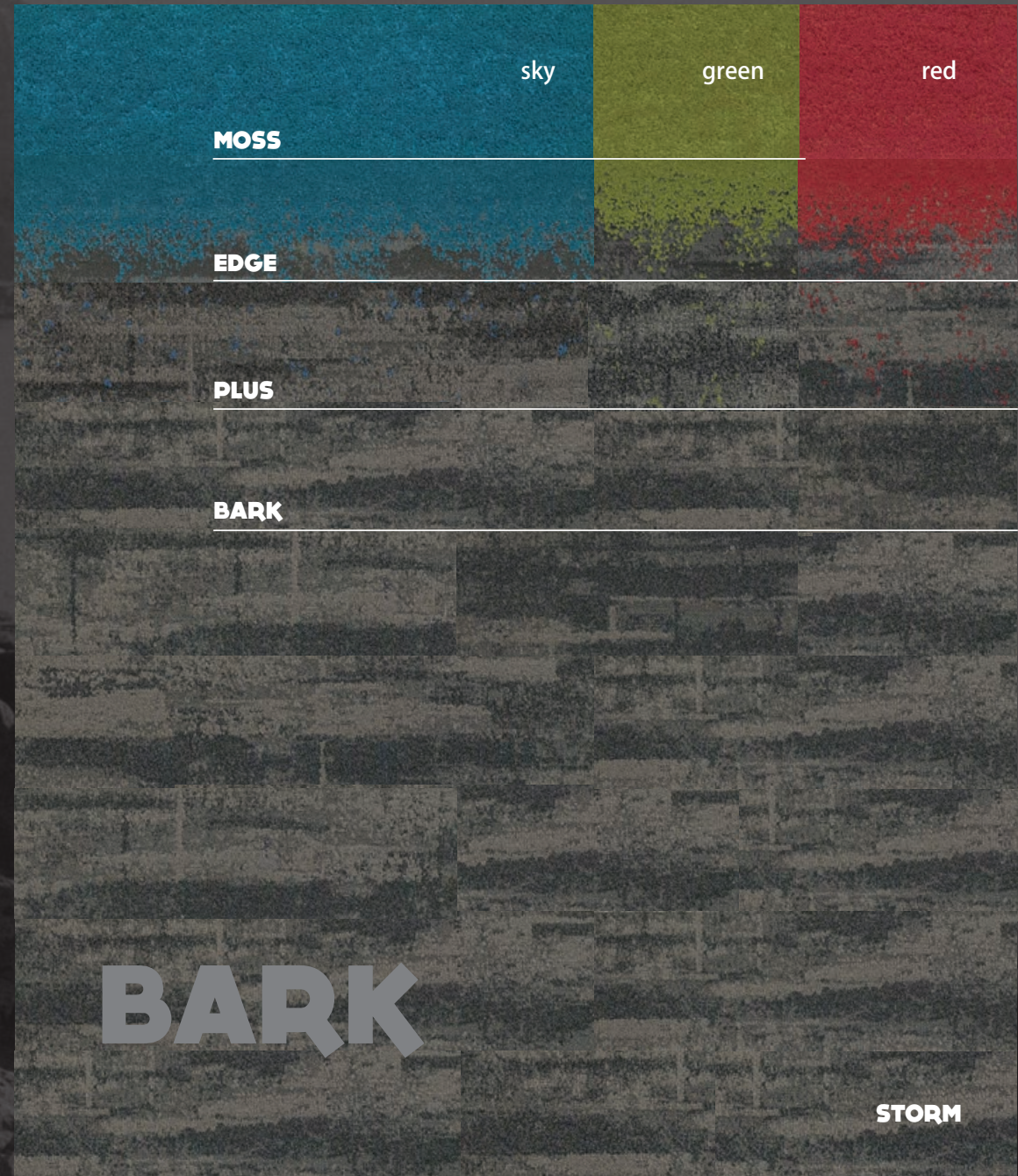


Botanica Planks can also be supplied with Comfi Bak®\*

\*100m² minimum order applies



[WWW.SIGNATUREFLOORS.COM.AU/VIVID-101](http://WWW.SIGNATUREFLOORS.COM.AU/VIVID-101)



# BARK

STORM



Unlimited  
Design Possibilities



teal

yellow

navy

**MOSS**

**EDGE**

**PLUS**

**BARK**

**BARK**

**CLOUD**



## DESIGN OPTIONS

# Shapely Botanica

Botanica MOSS, EDGE, PLUS, STONE and BARK can be ordered in Shapes by Signature™ modular shapes:

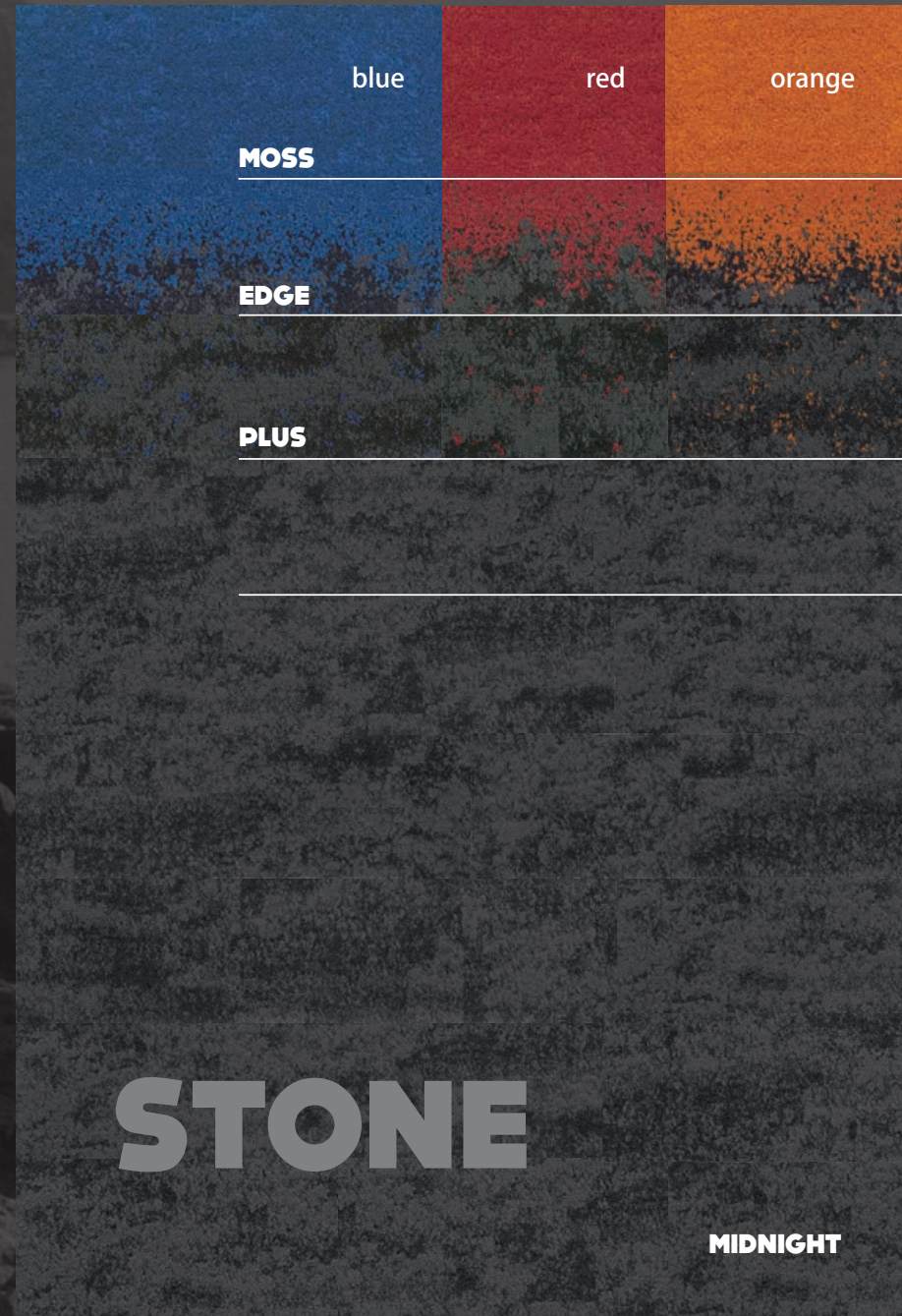
- rightangle
- rectangle
- hexagon
- trapezoid
- triangle
- square

And in VIVID 101 colours.

\* 100m<sup>2</sup> minimum order applies



[WWW.SIGNATUREFLOORS.COM.AU/ABOUT-SHAPES](http://WWW.SIGNATUREFLOORS.COM.AU/ABOUT-SHAPES)



## COMFORT OPTIONS

# Comfi Botanica

Botanica MOSS, EDGE, PLUS, STONE and BARK can be ordered in Comfi Bak® by Signature

Comfi Bak® offers better acoustic performance, better thermal resistance and of course, better comfort underfoot.

\* 100m<sup>2</sup> minimum order applies



red

teal

navy

**MOSS**

**EDGE**

**PLUS**

**STONE**

**STORM**



sea

green

wine

**MOSS**

**EDGE**

**PLUS**

**STONE**

**STONE**

**CLOUD**

# PLANKS

## SPECIFICATIONS

<b>product construction</b>	stone / bark multi-level loop
<b>yarn/fibre</b>	solution dyed nylon & Antron Legacy®
<b>pile weight</b>	1090g/m <sup>2</sup>
<b>pile height</b>	5.5mm
<b>gauge</b>	1/10
<b>plank size</b>	250mm x 1000mm
<b>total thickness</b>	8.5mm
<b>carton size</b>	4sqm
<b>total weight</b>	6.0g/m <sup>2</sup>
<b>dimensional stability</b>	<0.15%
<b>backing</b>	Thermo Bak™
<b>electrostatic propensity</b>	<3.0kv
<b>fire rating ISO 9239.1</b>	>4.5kw/m <sup>2</sup> critical radiant flux
<b>stain/soil</b>	UltraGard™
<b>traffic</b>	extra heavy duty commercial
<b>recommended adhesive</b>	RLA Polymers GS300 & Mapei ECO 800
<b>installation method</b>	ashlar, brick, herringbone
<b>Comfi Bak® option</b>	100m <sup>2</sup> min
<b>customise vivid 101</b>	100m <sup>2</sup> min
<b>warranty</b>	15 year limited
<b>co-ordinates</b>	all intelli & friendly carpet tiles
<b>GreenStar</b>	89% GreenStar points
<b>availability</b>	in stock

<b>product construction</b>	stone plus / bark plus multi-level loop
<b>yarn/fibre</b>	solution dyed nylon & Antron Legacy®
<b>pile weight</b>	1120g/m <sup>2</sup>
<b>pile height</b>	5.5mm
<b>gauge</b>	1/10
<b>plank size</b>	250mm x 1000mm
<b>total thickness</b>	8.5mm
<b>carton size</b>	4sqm
<b>total weight</b>	6.0g/m <sup>2</sup>
<b>dimensional stability</b>	<0.15%
<b>backing</b>	Thermo Bak™
<b>electrostatic propensity</b>	<3.0kv
<b>fire rating ISO 9239.1</b>	>4.5kw/m <sup>2</sup> critical radiant flux
<b>stain/soil</b>	UltraGard™
<b>traffic</b>	extra heavy duty commercial
<b>recommended adhesive</b>	RLA Polymers GS300 & Mapei ECO 800
<b>installation method</b>	ashlar, brick, herringbone
<b>Comfi Bak® option</b>	100m <sup>2</sup> min
<b>customise vivid 101</b>	100m <sup>2</sup> min
<b>warranty</b>	15 year limited
<b>co-ordinates</b>	all intelli & friendly carpet tiles
<b>GreenStar</b>	89% GreenStar points
<b>availability</b>	in stock

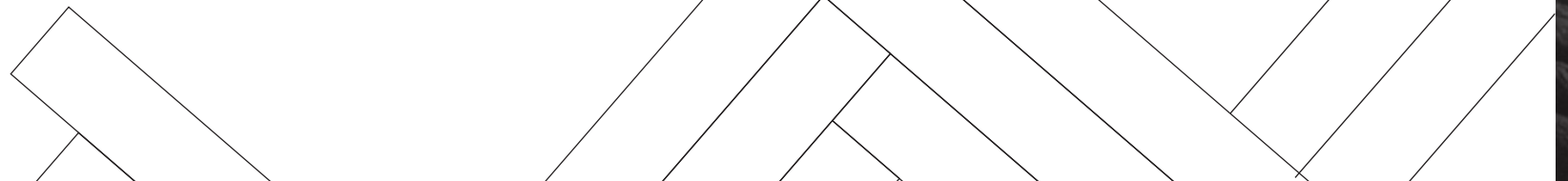
<b>product construction</b>	stone edge / bark edge multi-level loop
<b>yarn/fibre</b>	solution dyed nylon & Antron Legacy®
<b>pile weight</b>	1120g/m <sup>2</sup>
<b>pile height</b>	5.5mm
<b>gauge</b>	1/10
<b>plank size</b>	250mm x 1000mm
<b>total thickness</b>	8.5mm
<b>carton size</b>	4sqm
<b>total weight</b>	6.0g/m <sup>2</sup>
<b>dimensional stability</b>	<0.15%
<b>backing</b>	Thermo Bak™
<b>electrostatic propensity</b>	<3.0kv
<b>fire rating ISO 9239.1</b>	>4.5kw/m <sup>2</sup> critical radiant flux
<b>stain/soil</b>	UltraGard™
<b>traffic</b>	extra heavy duty commercial
<b>recommended adhesive</b>	RLA Polymers GS300 & Mapei ECO 800
<b>installation method</b>	ashlar, brick, herringbone
<b>Comfi Bak® option</b>	100m <sup>2</sup> min
<b>customise vivid 101</b>	100m <sup>2</sup> min
<b>warranty</b>	15 year limited
<b>co-ordinates</b>	all intelli & friendly carpet tiles
<b>GreenStar</b>	89% GreenStar points
<b>availability</b>	in stock

<b>product construction</b>	moss multi-level loop
<b>yarn/fibre</b>	Antron Legacy®
<b>pile weight</b>	1090g/m <sup>2</sup>
<b>pile height</b>	5.5mm
<b>gauge</b>	1/10
<b>plank size</b>	250mm x 1000mm
<b>total thickness</b>	8.5mm
<b>carton size</b>	4sqm
<b>total weight</b>	6.0g/m <sup>2</sup>
<b>dimensional stability</b>	<0.15%
<b>backing</b>	Thermo Bak™
<b>electrostatic propensity</b>	<3.0kv
<b>fire rating ISO 9239.1</b>	>4.5kw/m <sup>2</sup> critical radiant flux
<b>stain/soil</b>	UltraGard™
<b>traffic</b>	extra heavy duty commercial
<b>recommended adhesive</b>	RLA Polymers GS300 & Mapei ECO 800
<b>installation method</b>	ashlar, brick, herringbone
<b>Comfi Bak® option</b>	100m <sup>2</sup> min
<b>customise vivid 101</b>	100m <sup>2</sup> min
<b>warranty</b>	15 year limited
<b>co-ordinates</b>	all intelli & friendly carpet tiles
<b>GreenStar</b>	89% GreenStar points
<b>availability</b>	in stock



**Declare.**

\*Our manufacturing process ensures no two planks are the same. Please note that there may be batch variations from different dye lots. To ensure a perfect match of moss and edge, a minimum order of 100m<sup>2</sup> of each is required.





**CUMULUS**  
DRIFTING CLOUDS  
OF GREY

# PLANKS

nature's perfect  
neutral hues



# PLANKS

**SPRING**  
ADDING COLOUR  
TO REAWAKEN  
THE SENSES



chilled sea blues  
for calming  
spaces

# PLANKS

**SURFS UP**  
THE PERFECT  
BLUE FOR THE  
PERFECT SET



**AGATE**  
LAYER UPON LAYER  
OF NEUTRAL  
GREYS

# BOTANICA

choose a  
brilliant highlight  
from ten  
perfect shades





# BOTANICA

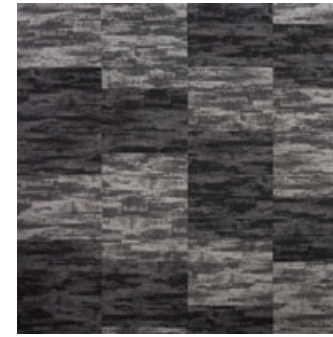
**ALL SORTS**  
COLOUR THAT  
INSPIRES  
CREATIVITY



urban spaces  
inspired by  
tropical flora



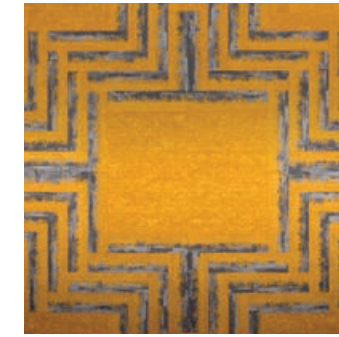
**CUMULUS** P11  
**BARK** cloud  
**STONE** cloud



**AGATE** P16  
**BARK** midnight, storm



**OASIS** P07  
**STONE** cloud, storm



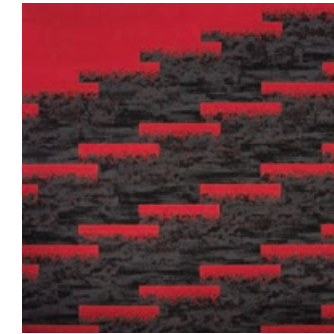
**HELLO SUNSHINE** INSERT  
**MOSS** yellow  
**BARK EDGE** cloud yellow



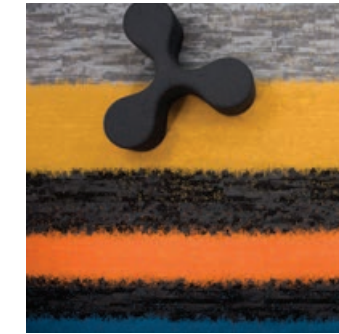
**ALL SORTS** P19  
**MOSS** yellow, orange, sky, red  
**BARK PLUS** midnight yellow, midnight sky  
**STONE PLUS** midnight orange, midnight red



**LOVER** P09  
**MOSS** wine  
**STONE** cloud  
**STONE EDGE** cloud wine, cloud green



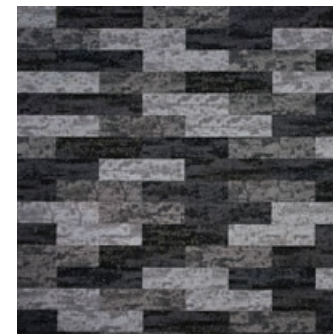
**HEARTBEAT** P05  
**MOSS** red  
**BARK** midnight  
**STONE EDGE** midnight red  
**STONE PLUS** midnight red



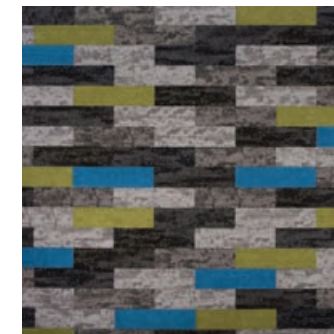
**A LAND DOWNUNDER** INSERT  
**MOSS** yellow, orange, sky  
**BARK EDGE** midnight sky, midnight yellow  
**BARK PLUS** midnight sky, midnight yellow  
**BARK PLUS** cloud yellow  
**STONE EDGE** midnight orange  
**STONE PLUS** midnight orange



**SURFS UP** P15  
**MOSS** teal  
**BARK** cloud  
**BARK EDGE** cloud teal  
**BARK PLUS** cloud teal



**JAPONAISE** P03  
**STONE** midnight, storm, cloud  
**BARK PLUS** midnight green, midnight sky

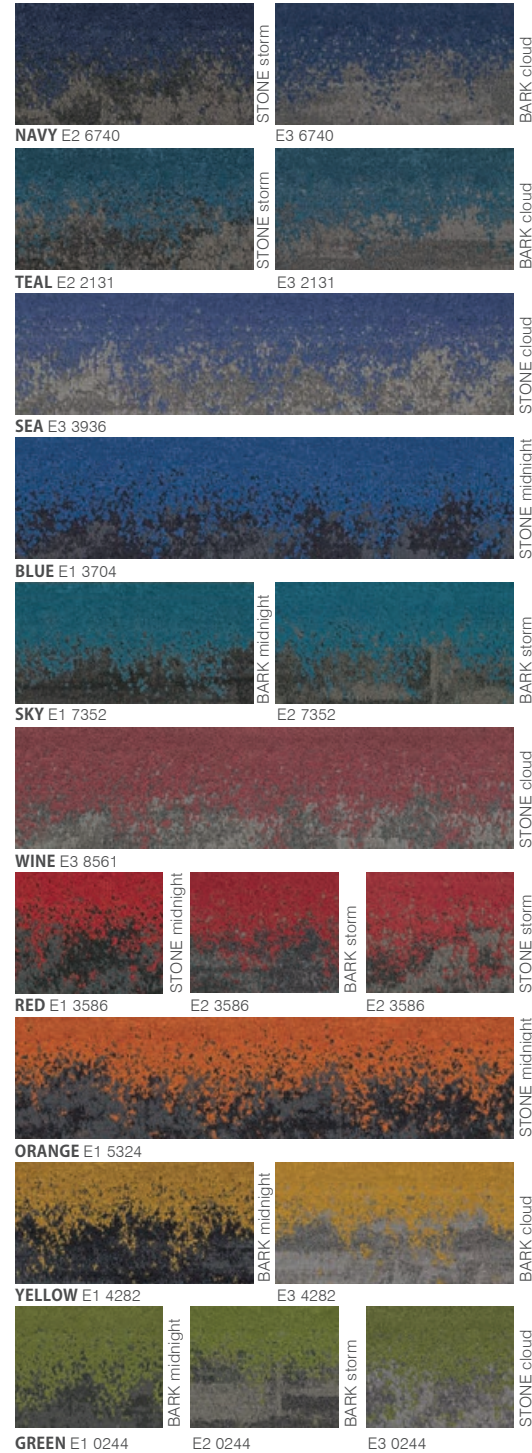


**SPRING** P13  
**MOSS** green, sky  
**STONE** midnight, storm, cloud  
**BARK PLUS** midnight green, midnight sky

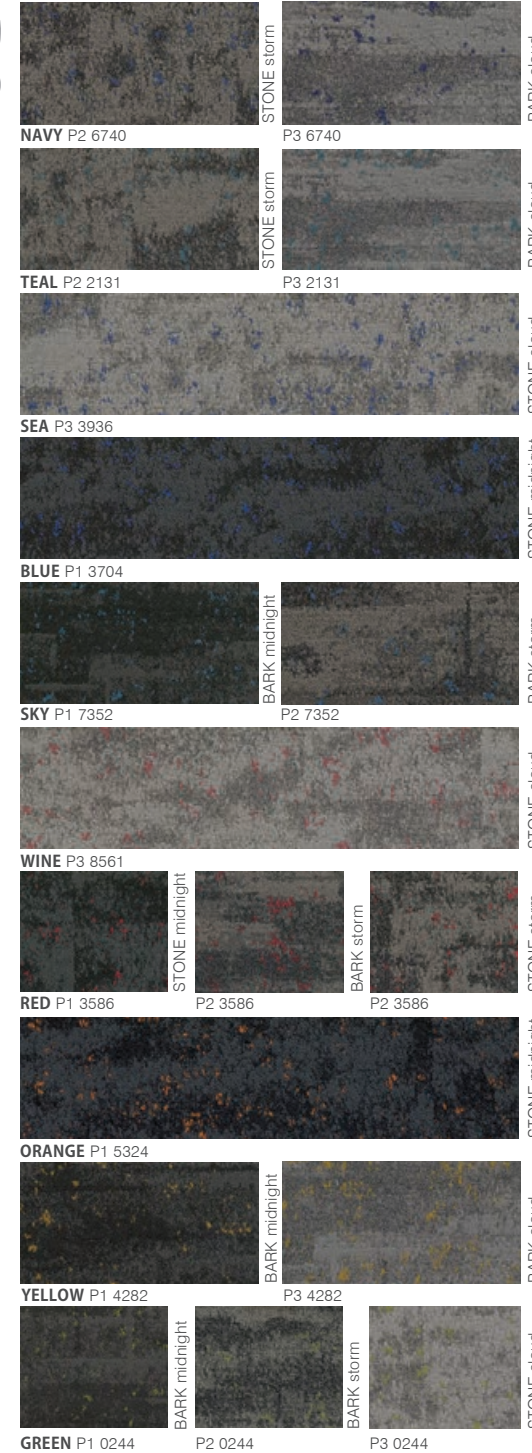
# MOSS



# EDGE



# PLUS



# BARK



# STONE



\*Our manufacturing process ensures no two planks are the same. Please note that there may be batch variations between different dye lots. To ensure a perfect match of Stone and Moss a minimum order of 100m<sup>2</sup> of each colour is required.

*Signature*

innovation & inspiration

Signature<sup>®</sup>  
floorconcepts

Specifications

are subject to manufacturing tolerances and may be changed without prior notice. Dye lots may vary in colour from sample and between production lots. All product purchases are subject to Signature Floorcoverings Standard Terms and Conditions of Sale.

Please refer to our Installation Guideline, Maintenance Manual and Warranty Document for further clarification. As per Competition & Consumer Act (CCA): "Our goods come with guarantees that cannot be excluded under the Australian Consumer Law. You are entitled to a replacement or refund for a major failure and compensation for any other reasonably foreseeable loss or damage.

You are also entitled to have the goods repaired or replaced if the goods fail to be of acceptable quality and the failure does not amount to a major failure. 02/2017©

FURNITURE CREDITS  
Own World, Melb & Sydney

AUS tel +613 9401 0888  
[signaturefloors.com.au](http://signaturefloors.com.au)

NZ tel +64 800 150 555  
[signaturefloors.co.nz](http://signaturefloors.co.nz)